



LOT 37
J438 O.R. 0247

25.00'

P.I.Q.
LOT 9

LOT AREA =
3,125± SQ.FT.

LOT 10
I943 O.R. 0952

LOT 8
J297 O.R. 0030

ASSESSOR'S
BLOCK
No. 2769

21st STREET (64' WIDE)

TWO STORY BLDG.
OVER GARAGE

TWO STORY BLDG
OVER GARAGE
(GARAGE LEVEL
SHOWN HEREON)

TWO STORY BLDG
OVER GARAGE
w/ ATTIC

0.07' CLR

0.05' CLR

0.01'
OV.

BLDG.
ON LINE

25.00'

235' PER DEED TO 21st STREET

20' OFFICIAL SIDEWALK
CITY CURB

1.10' CLR

PT 'A'

COLLINGWOOD STREET (60' WIDE)

LEGEND

- PROPERTY LINE (P.I.Q.)
- PROPERTY LINE (OTHERS)
- RIGHT OF WAY LINE
- BUILDING LINE

ABBREVIATIONS

- | | | | |
|-------|-----------------|---------|----------------------|
| BLDG. | BUILDING | PT. | POINT |
| COR. | CORNER | P.I.Q. | PROPERTY IN QUESTION |
| CLR. | CLEAR | SQ. FT. | SQUARE FEET |
| O.R. | OFFICIAL RECORD | | |
| OV. | OVER | | |

SURVEYED BY JB	DRAWN BY MJ	CHECKED BY B.P.	Job No. 6029.2
----------------	-------------	-----------------	----------------

EXHIBIT " B "

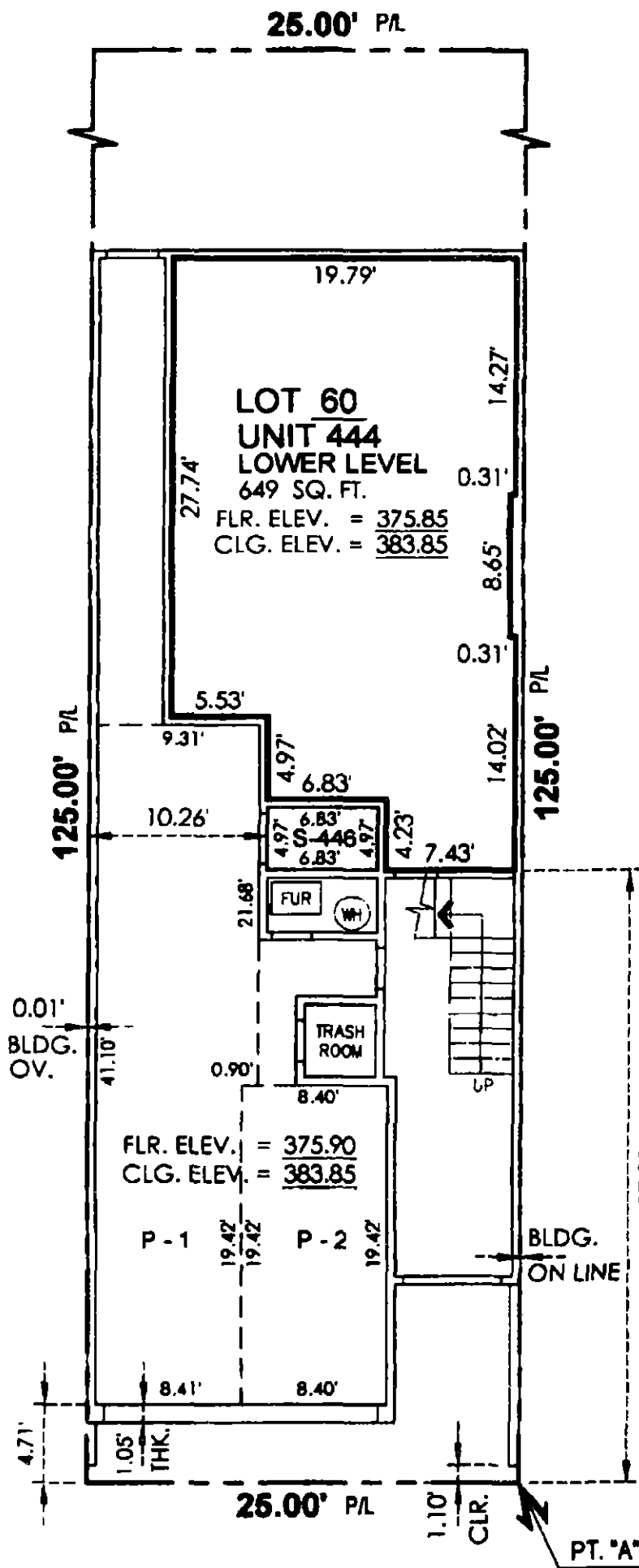
DATE: MARCH 2009

A TWO RESIDENTIAL UNIT CONDOMINIUM PLAN
FOR
444 - 446 COLLINGWOOD STREET
ASSESSOR'S BLOCK No. 2769, LOT No. 9
SAN FRANCISCO CALIFORNIA

SHEET No.: 4 OF 8

SCALE: 1" = 20'

TRANSAMERICAN ENGINEERS
Fox Plaza, 1390 Market St., Suite 201
San Francisco, CA 94102
415-553-4092 FAX: 415-553-4071



ABBREVIATIONS

- BLDG BUILDING
- CLR CLEAR
- CLG. CEILING
- ELEV ELEVATION
- D DECK
- DN DOWN
- DR DRYER
- FLR. FLOOR
- FUR. FURNACE
- PL PROPERTY LINE
- PT. POINT
- SQ.FT. SQUARE FEET
- S STORAGE
- THK THICK
- W WASHER
- WH WATER HEATER

SURVEYED BY: J.B.
DRAWN BY: HJ
CHECKED BY: B P
Job No. 6029.2

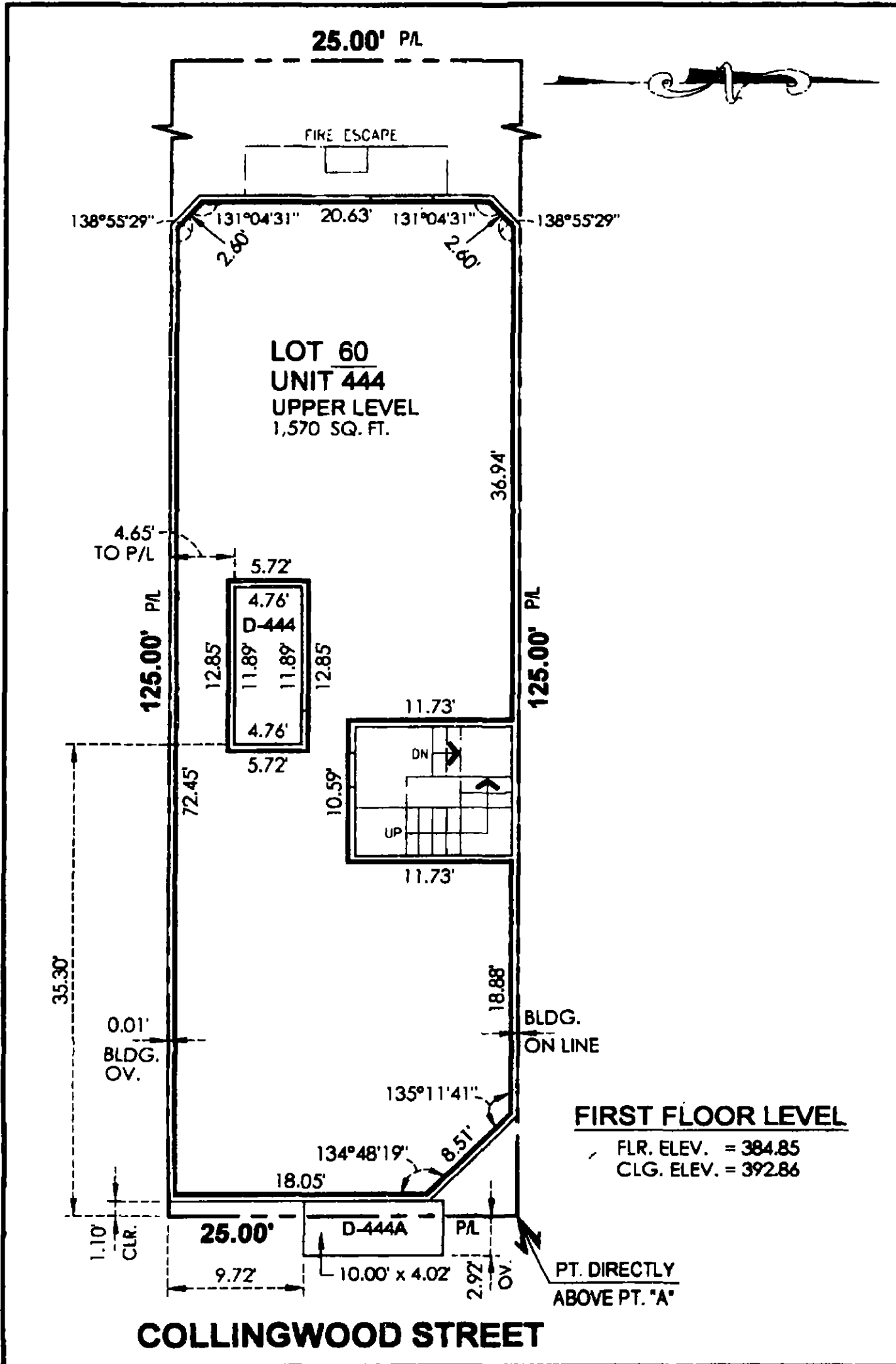
EXHIBIT " B "

**A TWO RESIDENTIAL UNIT CONDOMINIUM PLAN
FOR
444 ~ 446 COLLINGWOOD STREET
ASSESSOR'S BLOCK No. 2769, LOT No. 9
SAN FRANCISCO CALIFORNIA**

DATE: MARCH 2009

SHEET No.: 5 OF 8

TRANSAMERICAN ENGINEERS
Fox Plaza, 1390 Market St., Suite 201
San Francisco, CA 94102
415-553-4082 FAX: 415-553-4071



SURVEYED BY J.B.
 DRAWN BY HJ
 CHECKED BY BP
 Job No. 6029.2

EXHIBIT " B "

DATE: MARCH 2009

A TWO RESIDENTIAL UNIT CONDOMINIUM PLAN FOR
444 ~ 446 COLLINGWOOD STREET
ASSESSOR'S BLOCK No. 2769, LOT No. 9
 SAN FRANCISCO CALIFORNIA

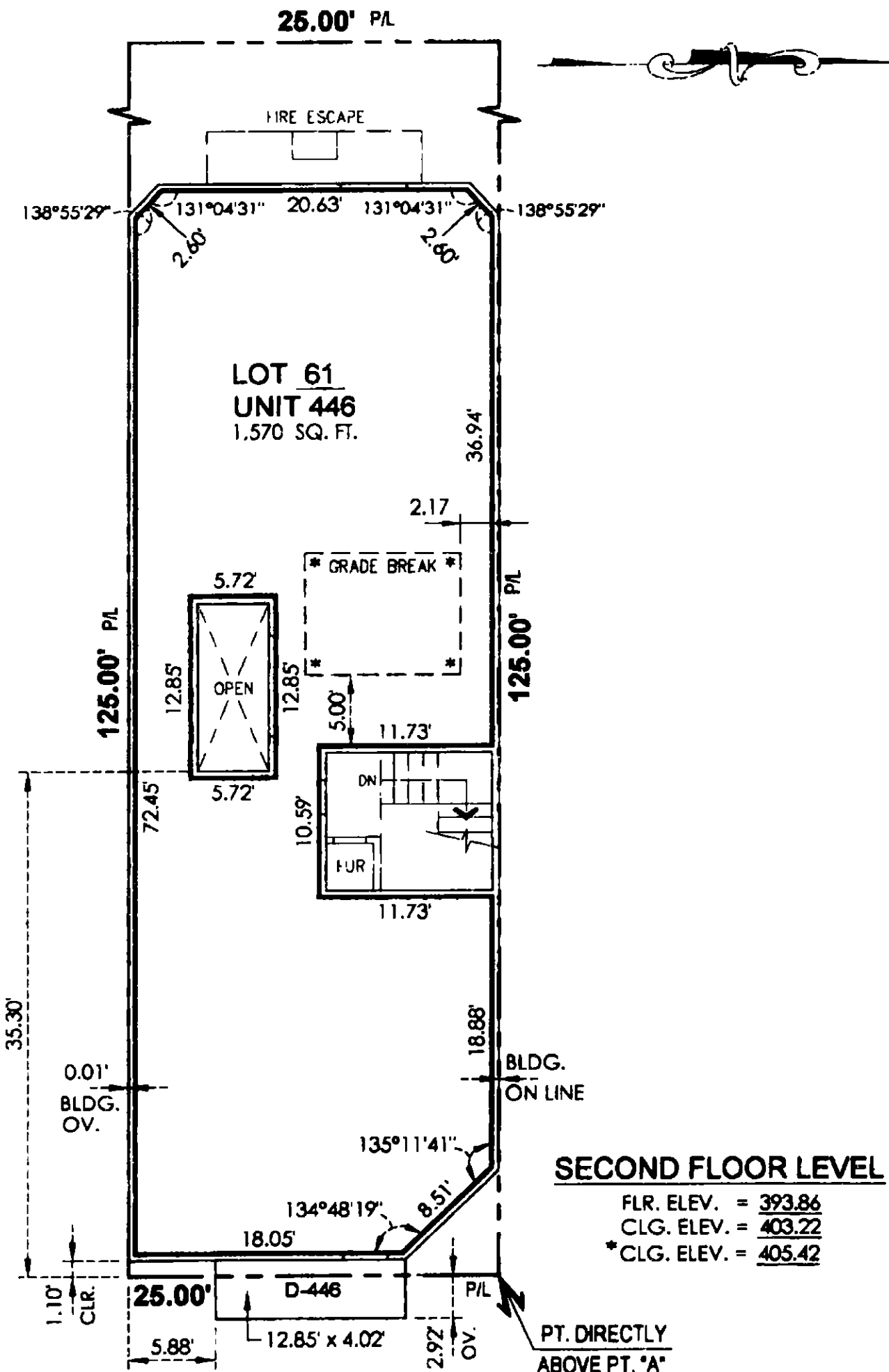
SCALE: 1" = 10'

SHEET No. 6 OF 8

TRANSAMERICAN ENGINEERS
 Fox Plaza, 1390 Market St., Suite 201
 San Francisco, CA 94102
 415-553-4092 FAX: 415-553-4071

FIRST FLOOR LEVEL
 FLR. ELEV. = 384.85
 CLG. ELEV. = 392.86

PT. DIRECTLY ABOVE PT. 'A'



LOT 61
UNIT 446
1,570 SQ. FT.

SECOND FLOOR LEVEL

FLR. ELEV. = 393.86
 CLG. ELEV. = 403.22
 * CLG. ELEV. = 405.42

COLLINGWOOD STREET

<p>SURVEYED BY J.B. DRAWN BY HJ CHECKED BY BP Job No 6029.2</p>	<p>EXHIBIT " B "</p>	<p>DATE: MARCH 2009</p>
<p>A TWO RESIDENTIAL UNIT CONDOMINIUM PLAN FOR 444 - 446 COLLINGWOOD STREET ASSESSOR'S BLOCK No. 2769, LOT No. 9 SAN FRANCISCO CALIFORNIA</p>		
<p>SCALE 1" = 10'</p>	<p>SHEET No.: 7 OF 8</p>	<p>TRANSAMERICAN ENGINEERS Fox Plaza, 1390 Market St., Suite 201 San Francisco, CA 94102 415-553-4092 FAX: 415-553-4071</p>

**TABLE FOR LOT AREA AND
PERCENTAGE OF OWNERSHIP
IN COMMON AREA**

UNIT	LOT	SQ. FT.	%
UNIT 444	60	2,219	58.56
UNIT 446	61	1,570	41.44
TOTAL		3,789	100.00

TRANSAMERICAN ENGINEERS
 Fox Plaza, 1380 Market St., Suite 201
 San Francisco, CA 94102
 415-553-4092 FAX. 415-553-4071

**A TWO RESIDENTIAL UNIT CONDOMINIUM PLAN
 FOR
 444 ~ 446 COLLINGWOOD STREET
 ASSESSOR'S BLOCK No. 2769, LOT No. 9
 SAN FRANCISCO CALIFORNIA**

SHEET No. 8 OF 8

EXHIBIT " B "

DATE. MARCH 2009

SURVEYED BY J.B.

DRAWN BY. HJ

CHECKED BY B.P.

Job No 6029.2