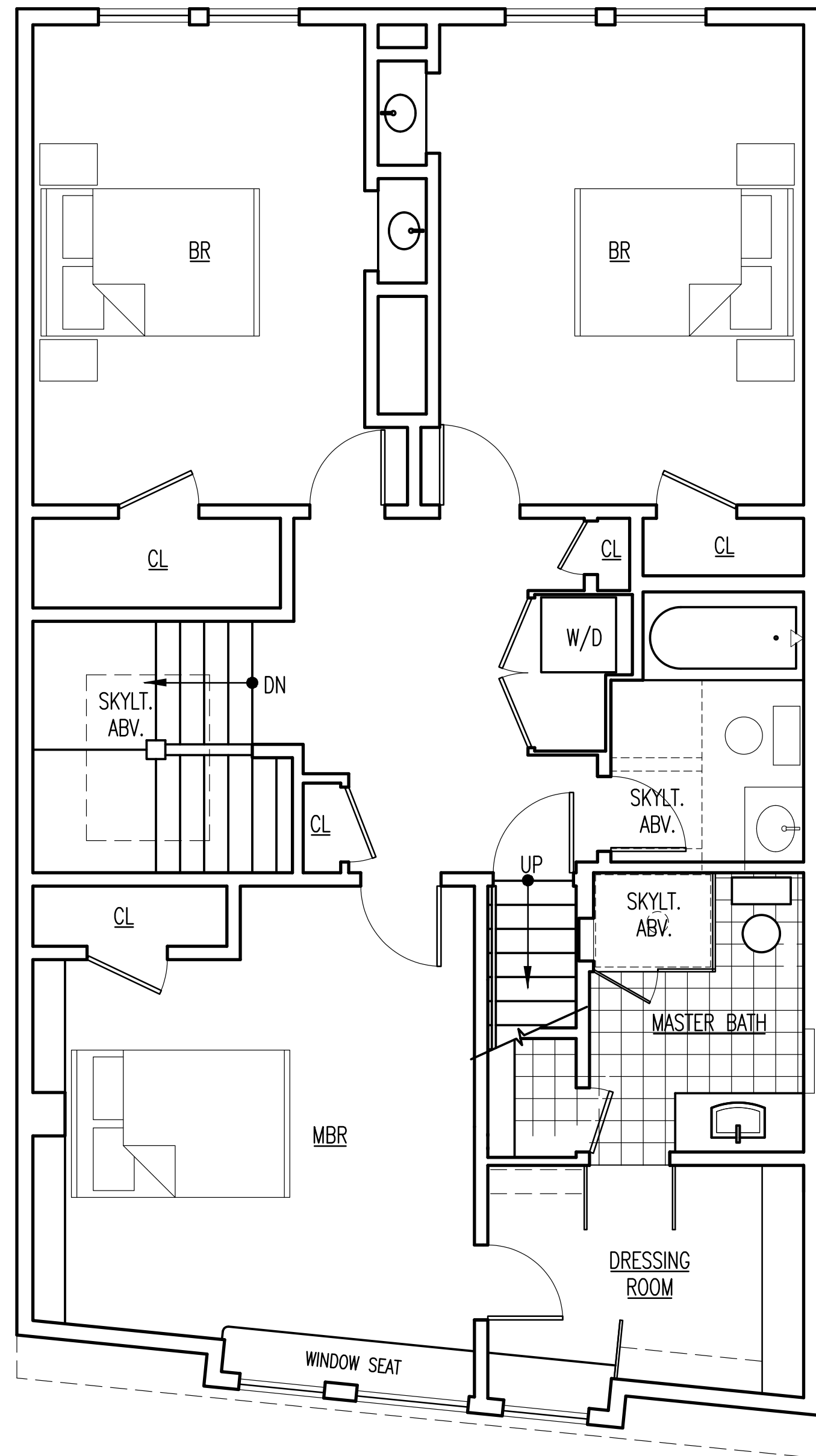
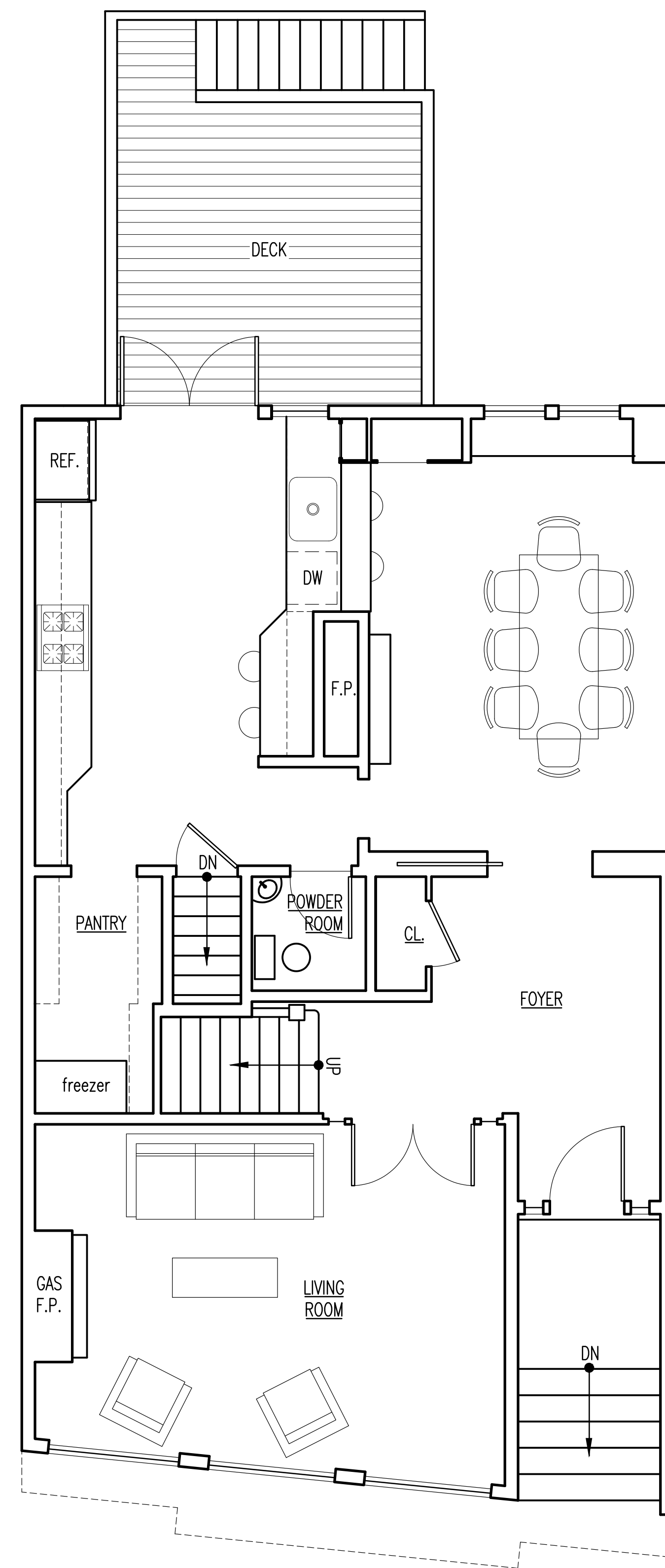


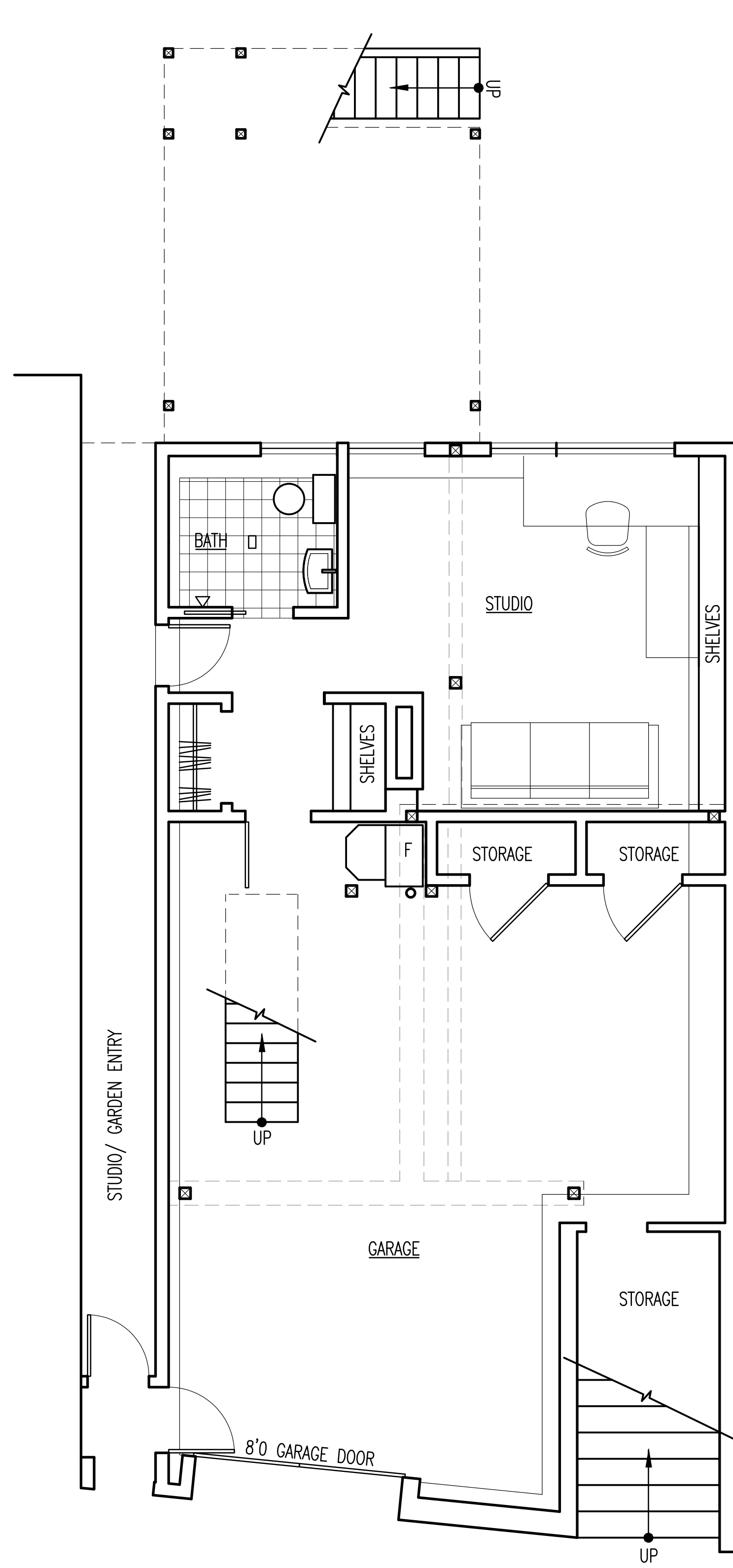
3 THIRD FLOOR PLAN 334 SF
SCALE: 1/4" = 1'-0"



2 SECOND FLOOR PLAN 1065 SF
SCALE: 1/4" = 1'-0"



1 FIRST FLOOR PLAN 956 SF
SCALE: 1/4" = 1'-0"



0 GROUND FLOOR PLAN 320 SF
SCALE: 1/4" = 1'-0"

REVISIONS

andy
rodgers
design
studio

1212 Arguello Blvd.
San Francisco, CA
94131
415 309 9612

ALTERATIONS TO :
1212 ARGUELLO BLVD.
SAN FRANCISCO, CALIFORNIA 94122
OWNERS: ANDY & BUTTE RODGERS, 415 309 9612

ISSUED FOR BUILDING PERMIT

FLOOR PLANS

DATE DEC. 06

SCALE 1/4"=1'-0"

DRAWN AR

JOB

SHEET

A2

OF SHEETS